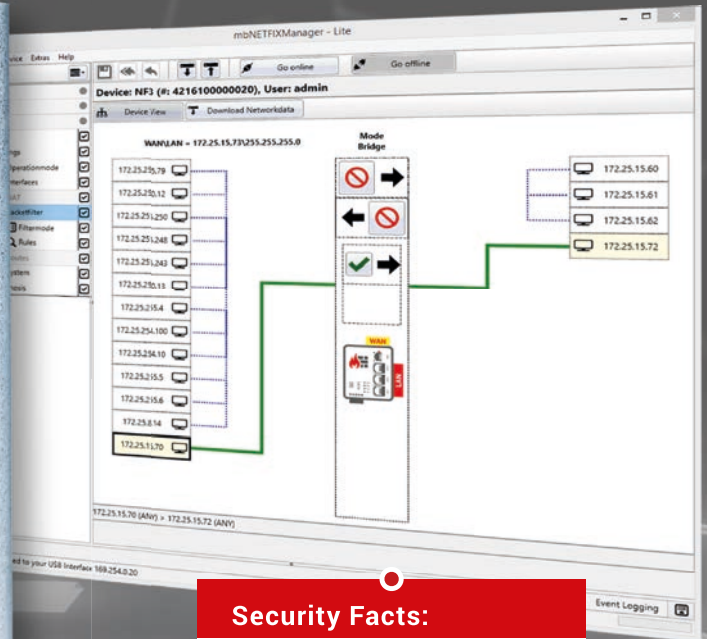




MB CONNECT LINE
remote maintenance solutions

NETWORK TRANSFERS QUICKLY SECURED



Security Facts:

- ✓ Access only via RSA key
- ✓ multistage user level concept
- ✓ Secure Boot concept

mbNETFIX

THE INDUSTRIAL FIREWALL FOR THE AUTOMATION USER

mbNETFIX is a self-learning, easy-to-configure industrial firewall. It can be operated in bridge- or in gateway mode.

In bridge mode it is ideal for retrofitting existing networks. It can be installed out of the box, without introducing changes in the network and, once installed, it protects your networks immediately.

In gateway mode, selected areas of a network can be separated. Again, the learning mode simplifies the creation of the filter tables.

The concept is based on "security by design" right from the start. In order to keep attack vectors as small as possible, a web interface was deliberately disregarded. The firewall is configured with a specific software via the USB port.

Top 5 facts:

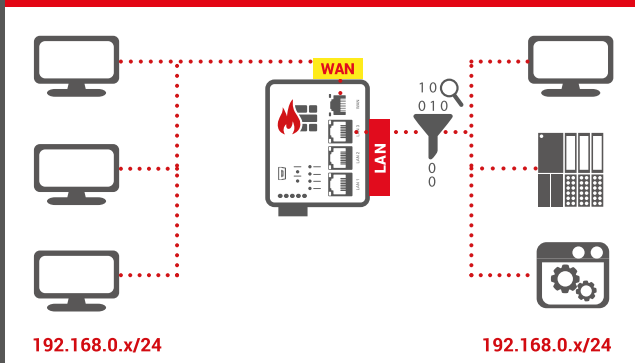
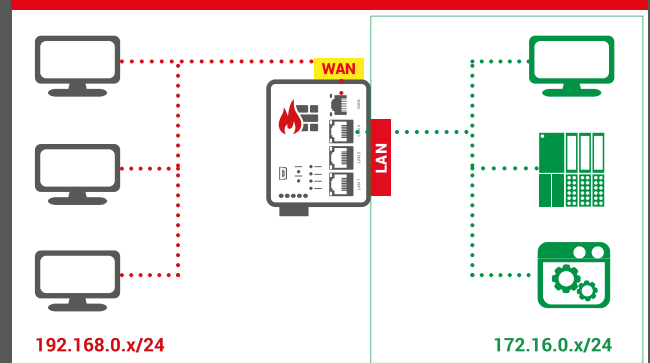
- ✓ Protects the machines in the network from attacks from the Internet
- ✓ Easy network segmentation with controlled routing and NAT
- ✓ Bridge- and Gatewaymode
- ✓ Integration into existing networks
- ✓ Convenient learning mode makes creation of filter tables simple & easy

Technical specifications:

- ✓ IP, port, MAC and protocol filters for monitoring and restricting data traffic
- ✓ Versatile NAT functionalities, eg 1: 1 NAT, SimpleNAT and port forwarding
- ✓ Static Routes
- ✓ 1x WAN and 3x LAN port switch
- ✓ Configuration with comfortable software
- ✓ Security by Design
- ✓ Power supply 10-30 VDC
- ✓ DIN rail mounting
- ✓ Dimensions 69 mm x 38.5 mm x 92.5 mm (W x D x H)



Name	Item no.	WAN	LAN	Description
NFH100	5.100.200.01.00	1x	3x	3x LAN 10/100 MBit/s
	5.900.000.01.00	-	-	USB stick with Manager Lite Software

Bridgemode**Gatewaymode**

In **Bridgemode**, mbNETFIX fits easily into existing networks without changing any network range and protects data exchange between its interfaces, filtering packets between WAN and LAN. It integrates transparently, so no IP address allocation is necessary.

In **Gatewaymode**, WAN and LAN interfaces will each get a different IP address, thus segmenting the original network. With this setup, functions such as NAT and Forwarding can be used to route data traffic to secondary networks. Meanwhile the packet filter manages data exchange between WAN and LAN.

www.mbconnectline.com

MB connect line GmbH

Winnettener Str. 6 + 49 (0) 9851 / 58 25 29 0
91550 Dinkelsbühl + 49 (0) 9851 / 58 25 29 99

info@mbconnectline.com
www.mbconnectline.com